

**CONTRACT 13933I - EXIT 3 SB MAINLINE, SB ON-RAMP AND NH ROUTE 111**

**Contract 13933H** involves the reconstruction and widening of 2.17 miles of I-93 NB mainline in Windham, mostly north of Exit 3, reconstruction of NH Route 111A and the NB on & off-ramps. This is the fifth of five roadway projects in the Exit 3 area and will complete all roadway work in this area. **The contract for this project was awarded to Weaver Bros. Construction Co., Inc. of Bow, NH in December 2013 for a low bid of \$32.3M.** This project has an estimated total cost of \$34.9M and **will complete the improvements planned for the Exit 3 area by the summer of 2016.**

Over the spring and summer the contractor continued to make significant progress and is still ahead of schedule. Major work items included:

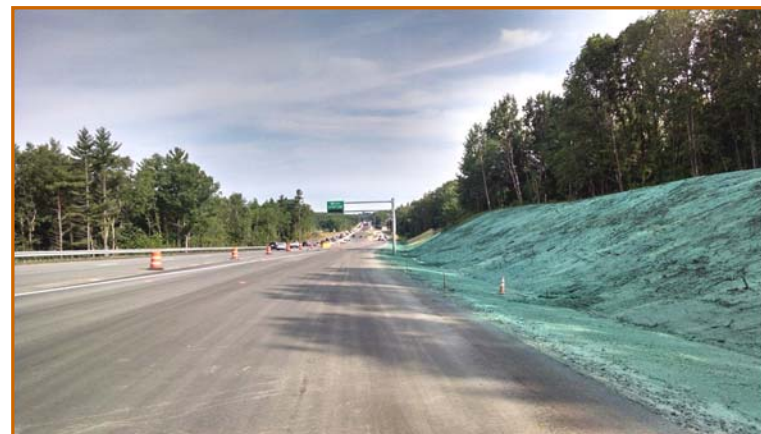
- Clearing, placement of fill, and paving on NB around the weigh station
- Continued grading and drainage installation for the new NB on-ramp
- Construction of detention basins
- Construction of soundwall at the southern end of the project.

In August the existing traffic pattern will be shifted to open the new NB on-ramp. Work will continue around the ramp and mainline to finalize slope work and paving. The old NB bridge over Rte 111A will be demolished. Later in the construction season (Sept. & Oct.) work will begin on Rte 111A and with finish paving at the southern and northern limits of the project.

Currently the project is approximately 45% complete



**Removal of bridge deck from old NB over NH 111A**



**New section of widened Northbound near weigh station**



**Completed section of new Soundwall**



**Clearing of loose rock from ledge cut**

To access the mobile website to find more project information, scan the QR Code or type the following link into your browser:

<http://m.rebuildingi93.com>



[RebuildingI93.com](http://RebuildingI93.com)

## CORRIDOR NEWS

I-93 Construction News and Highlights

Summer/2015 ~ Issue No. 16

~ **I-93 Improvements** ~ ***Moving Ahead*** ~

**I-93 Keeps Moving Ahead in 2015**

Construction activities keep moving forward and continue to provide expanded traffic capacity with the opening of new exit ramps and additional traffic lanes on the highway. Construction in the Exit 2 area (Contract 13933E) will be substantially complete in September, while the contracts in the Exit 3 area (Contract 13933H & 13933I) made significant progress working towards a 2016 completion. For each of these projects the contractors completed a significant amount of work that may not be readily noticeable to the public such as drainage installation, rock/earth excavation, and creation of water quality detention basis, etc. Milestones reached this year that are more visible to the public include the following:

- ◆ Opening of new Exit 2 Southbound exit ramps, eliminating loop ramps and improving interchange capacity
- ◆ Reconstruction of Pelhem Road in the Exit 2 area, improving the flow of local traffic as well as entrance and exiting of the highway
- ◆ Construction and opening of the new Northbound Bridge over Pelhem Road
- ◆ Opening of 4 miles of a third Northbound lane through the Exit 2 area (Exit 1 to Exit 3)
- ◆ Construction of a new section of Route 111 in Windham (opened in August).
- ◆ Construction of a new Northbound on-ramp at Exit 3 (opened in August)
- ◆ Widening of Northbound north of Exit 3 (by weigh station)
- ◆ Installation of sound wall at various locations from Exit 2 to Exit 3.



**New Soundwall adjacent to NB Mainline near Canobie Lake**

While construction continued on the southern portion (Exit 3 south) of the I-93 project, engineering design work progressed on the northern portion (north of Exit 3). With the design of two of the remaining four construction contracts being completed, it is anticipated that these two new projects will be advertised for bidding this Fall and will start construction in 2016. These projects include:

- ◆ 14633B - Widening of NB & SB between Exits 3 and 4
- ◆ 14633H - Widening of NB & SB between Exit 5 and the I-293 Split

The two remaining construction projects (14633D & I) will improve NB & SB through Exit 4 to Exit 5, build new bridges for Route 102 and Ash Street bridges over the highway, and improve the Exit 4 interchange. These project will be advertised for bidding in late 2016 with a construction start in 2017.

Content:

2015 Progress	1
Exit 2 Interchange	2
Northern Projects	3
Project Graphic	4
Project Summary	5
Exit 3 Area Projects	6 - 7
Exit 3 Area Projects	8

**New Hampshire Department of Transportation**

John O. Morton Building  
7 Hazen Drive  
Concord, NH 03302-0483

For more information, phone  
(603) 271-2171 or email  
[Contact@RebuildingI93.com](mailto:Contact@RebuildingI93.com)





**EXIT 2, INTERCHANGE RECONSTRUCTION**

**PROJECT OVERVIEW:** **Contract 13933E** will be substantially complete in September of this year. This project has finalized the reconstruction of Exit 2 by adding a lane in each direction, thus opening three lanes of travel on NB & SB from the state line to Route 111 in Windham. **The contract was awarded to George Cairns & Sons with a bid of \$40.9M in July 2012.** Over the past three years this project has:

- Replaced two “Red List” bridges over Pelham Road.
- Reconstructed/widened approximately 1.3 miles of I-93 NB and 1.8 miles of SB mainline.
- Reconstructed/widened Pelham Road to an eight-lane section, between Stiles/Manor Parkway and Policy Street.
- Coordinated all (five) traffic signals along Pelham Road to improve traffic flow.
- Constructed a 1,950 linear foot sound wall along the NB mainline near South Shore Road.
- Constructed the Haigh Avenue mitigation site, creating 7.6 acres and nine acre-feet of floodplain mitigation.

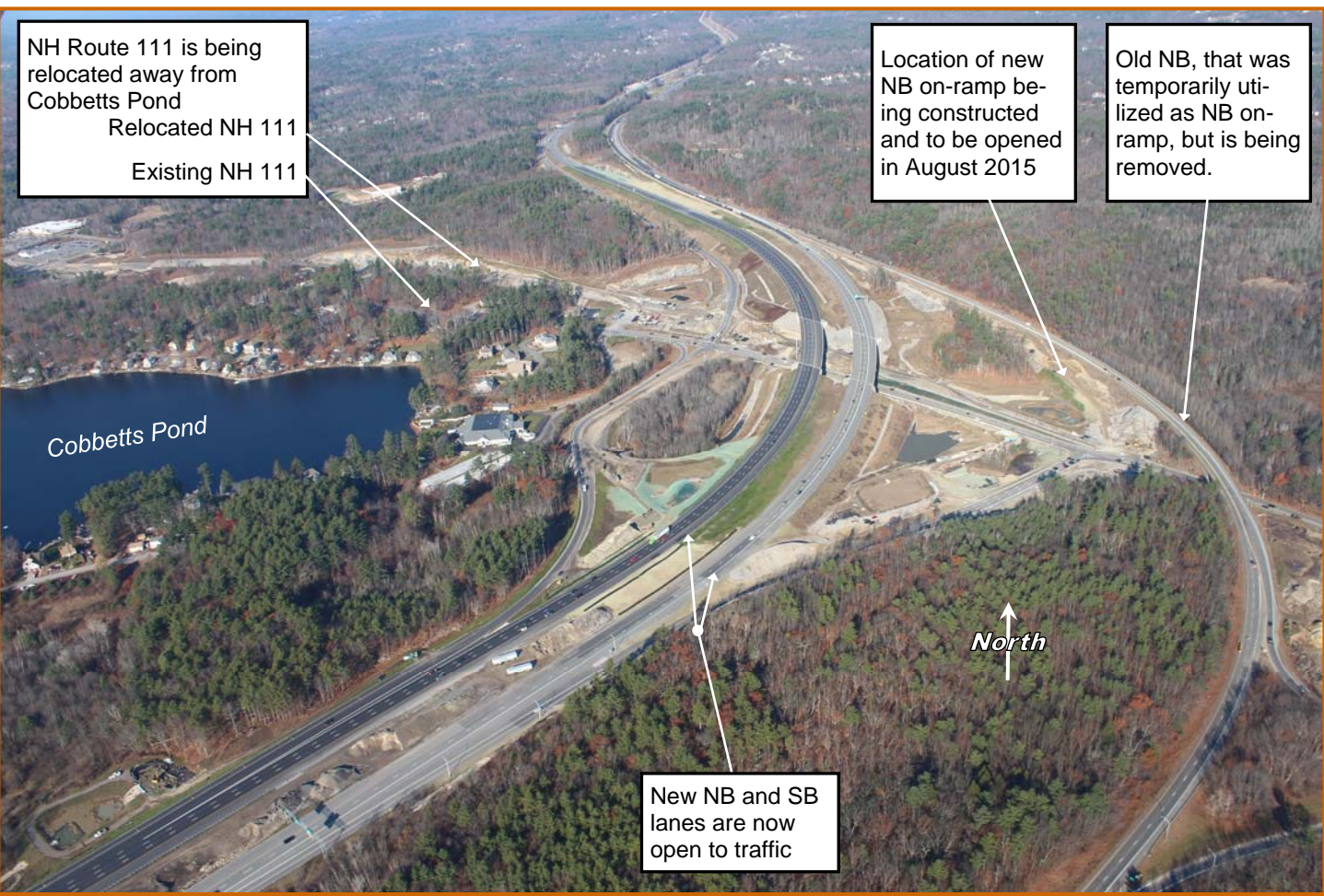
Over spring and summer, there has been major progress, improving traffic flow in the Exit 2 area. Work completed this year includes the following:

- Construction of a new NB Bridge and related mainline road work.
- Reconstruction of Pelham Road between Stiles Road (west of I-93) to Policy Street (east of I-93)
- Construction and opening of the new SB On & Off Ramps, eliminating the old “loop” ramps.
- Construction of sound walls, traffic signals and water quality detention basins.

**With the majority of the construction work complete, in August and September, work will include final paving of Pelham Road and mainline I-93.** This project has a total estimated cost of \$43.6M.



**Exit 2 Southbound Ramps:** One of the major accomplishments of this project was the reconfiguration of the SB exit ramps. The previously existing SB loop ramps have been replaced with a “diamond” interchange to facilitate the flow of traffic. The graphics below show the previous versus the new ramp configuration.



Exit 3 Area (November 2014) looking north

**CONTRACT 10418H - EXIT 3 AREA PARK-AND-RIDE:** This contract will construct a park-and-ride facility within the existing state right-of-way in the area enclosed by the old NB on-ramp loop area. Because of its location, all roadway construction at Exit 3 must be completed prior to the PNR being constructed. Therefore, **this project is expected to advertise in the fall of 2016.**





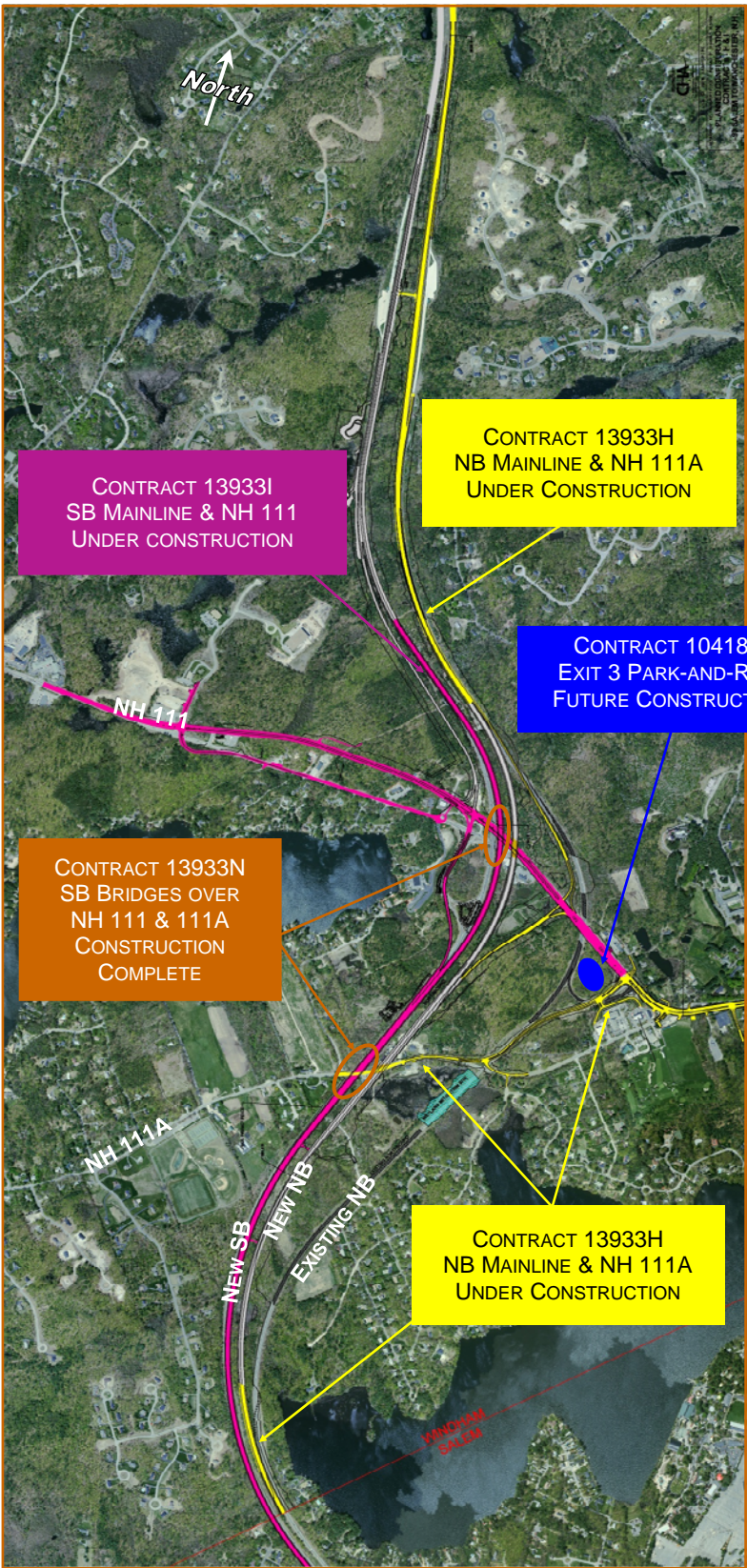
**CONTRACT 13933I  
EXIT 3 SB MAINLINE,  
SB ON-RAMP AND NH ROUTE 111**

This contract is reconstructing and widening 2.9 miles of I-93 SB mainline in Windham in the Exit 3 area, relocating 1.25 miles of NH Route 111 and constructing a new SB on-ramp. This is the fourth of five projects required to complete highway improvements in the Exit 3 area.

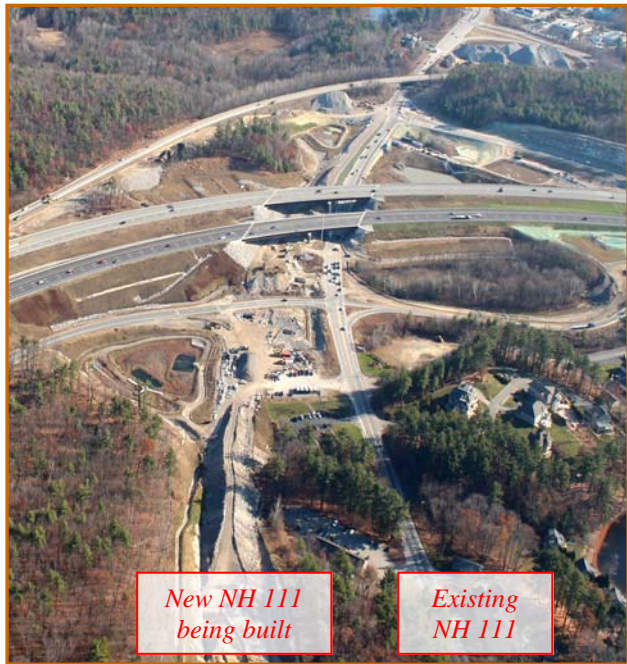
**This contract was awarded to R. S. Audley, Inc. of Bow, NH with a low bid of \$33M.** Over the spring and summer work has been concentrating on the NH 111 alignment and the tie in at Wall Street. Work items included:

- Rock crushing operations
- Drainage installation along the new NH 111 alignment and at the Wall Street intersection
- Final grading and paving along NH 111
- Signal installation at NH 111 / Wall Street

In August, traffic will be shifted to the new NH 111 alignment. Following the traffic shift, and to finish out this construction season, final tie-ins to NH 111 will be completed, a new cul-de-sac will be created at the end of the current NH 111 and final paving of SB Mainline will be completed. The project is currently 80% complete and is **expected to be completed in the summer of 2016** at an estimated total cost of \$35.1M.



Exit 3 Area Construction showing contract breakouts



Exit 3 Area (November 2014) - Aerial Photo taken looking east, showing the existing and new location of Route 111 and new NB and SB Bridges

**Northern Section Contract Breakouts**

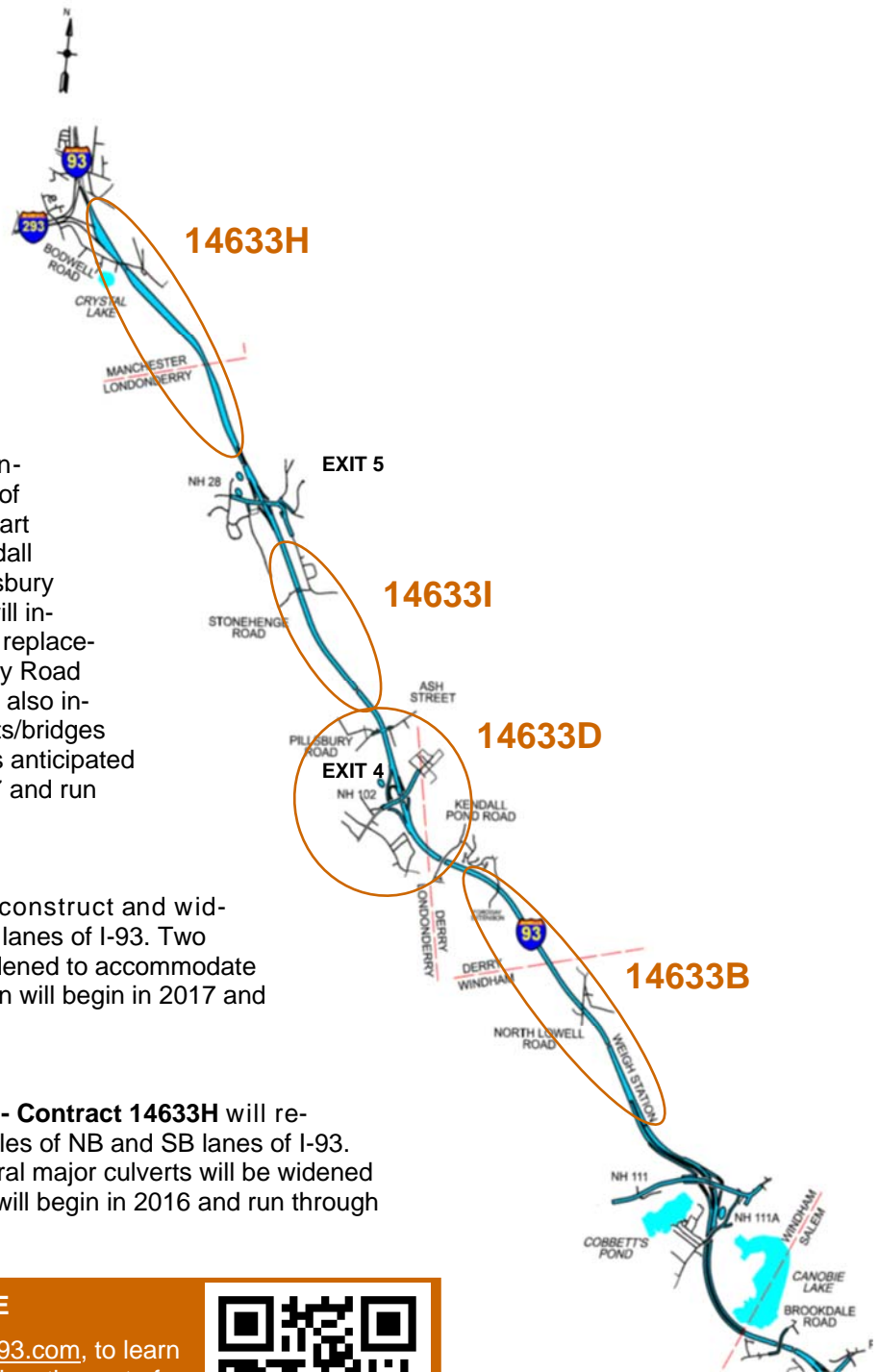
With the passing of Senate Bill 367, in May of 2104, the state has secured funding of the northern section projects. The following offers a brief overview of the remaining northern projects.

**Weigh Station to Kendall Pond Road – Contract 14633B** will reconstruct and widen approximately 3.5 miles of both the NB and SB lanes of I-93. Four bridges, NB & SB over North Lowell Road and Fordway Extension, will be widened to accommodate this work. It is anticipated that construction will begin in April of 2016 and run through 2019, costing \$52.6M+/-.

**Exit 4 Area – Contract 14633D** will reconstruct and widen approximately two miles of NB and SB lanes of I-93. This work will start with the widening of the bridges over Kendall Pond Road and go to just north of the Pillsbury Road overpass. Work to improve Exit 4 will include the reconstruction of the ramps and replacement of the Route 102 Bridge and Pillsbury Road Bridge over the interstate. This project will also include the replacement of the major culverts/bridges carrying NB & SB over Beaver Brook. It is anticipated that construction will begin in April of 2017 and run through 2020, costing \$66.7M+/-.

**Exit 4 to Exit 5 – Contract 14633I** will reconstruct and widen approximately two miles of NB and SB lanes of I-93. Two bridges over Stonehenge Road will be widened to accommodate this work. It is anticipated that construction will begin in 2017 and run through 2019, costing \$31.4M+/-.

**North of Exit 5 to the I-293 Interchange - Contract 14633H** will reconstruct and widen approximately two miles of NB and SB lanes of I-93. Two bridges over Bodwell Road and several major culverts will be widened to accommodate this work. Construction will begin in 2016 and run through 2019, costing \$48.7M+/-.



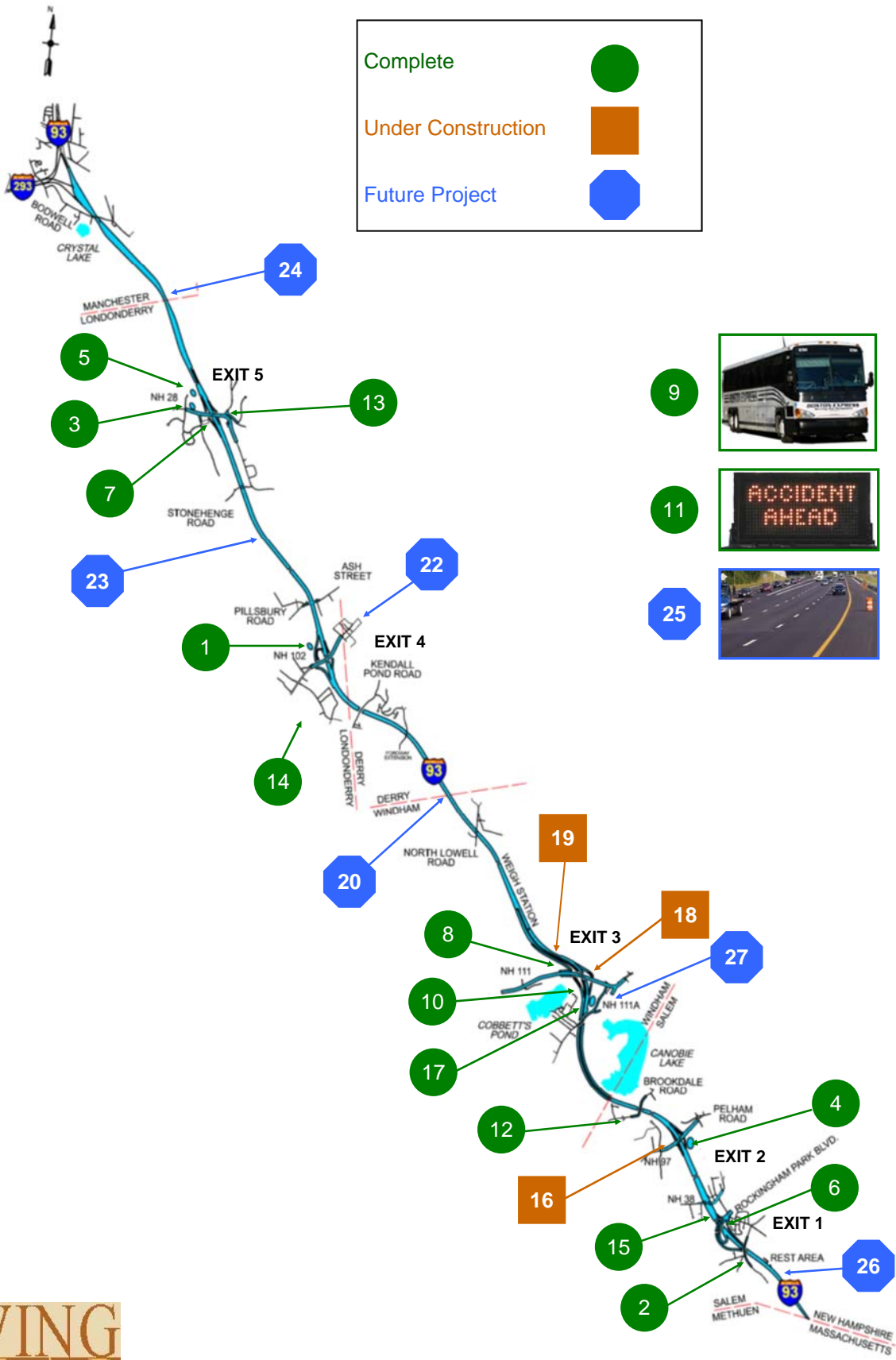
**I-93 PROJECT WEBSITE**

Visit the I-93 Project Website, [rebuildingi93.com](http://rebuildingi93.com), to learn more about the Northern projects, as well as the rest of the Salem to Manchester I-93 Improvements project. The project website also has gone mobile! Just search for NH I93 or scan the QR Code to the left.



**MOVING  
AHEAD**





I-93 PROJECT SUMMARY OF PROJECTS TO DATE					
	Status	Project Description	Contract Number	Constructed To/From	Cost (M)
1	Complete	Exit 4 Bus Terminal/PNR	10418M	01/06 - 05/07	\$1.4
2	Complete	Cross Street Bridge	13933B	11/06 - 10/08	\$6.6
3	Complete	Exit 5 PNR/Rockingham Road	10418I	12/06 - 10/08	\$7.5
4	Complete	Exit 2 Bus Terminal/PNR	10418G	03/07 - 10/08	\$6.2
5	Complete	Exit 5 Bus Terminal/Maintenance Facility	10418N	08/07 - 10/08	\$6.5
6	Complete	Exit 1 Ramps & Bridges	13933C	09/07 - 10/09	\$24.1
7	Complete	Exit 5 Ramps & Bridges	14633E	07/08 - 05/10	\$15.1
8	Complete	Exit 3 SB Off-Ramp & NB Bridges	13933K	09/08 - 11/10	\$26.7
9	Complete	Bus Procurement -Operation for Expanded Service	10418L	Service Began 11/08	\$19.3
10	Complete	Exit 3 NB Mainline	13933G	05/09 - 04/12	\$30.7
11	Complete	Phase I Intelligent Transportation Systems (ITS)	10418Z	11/09 - 11/11	\$4.4
12	Complete	Brookdale Road Bridge	13933F	06/10 - 07/12	\$5.0
13	Complete	Exit 5/Route 28 Interchange	14633F	03/11 - 08/14	\$35.6
14	Complete	South Road Mitigation	10418F	03/11 - 08/14	\$1.3
15	Complete	Exit 1 Area, NB & SB Mainline	13933D	03/11 - 08/13	\$31.3
17	Complete	Exit 3 SB Bridges over Routes 111 & 111A	13933N	03/12 - 09/13	\$11.5
Completed Construction subtotal:					\$233.2
16	In Progress	Exit 2 Interchange Reconstruction	13933E	07/12 - 09/15	\$43.6
18	In Progress	Exit 3 - SB Mainline, SB On-Ramp & NH 111	13933I	10/12 - 06/16	\$35.1
19	In Progress	Exit 3 NB Mainline, NH Route 111A	13933H	11/13 - 06/16	\$34.9
Under Construction subtotal:					\$113.6
20	Future	NB & SB Mainline between Exit 3 & 4	14633B	2016-2019	\$52.6
21		<i>This project has been incorporated into 14633D</i>	14633C		
22	Future	NB & SB Mainline, Ramps & NH 102 Br. at Exit 4	14633D	2017-2020	\$66.7
23	Future	NB & SB Mainline between Exit 4 & 5	14633I	2017-2019	\$31.4
24	Future	NB & SB Mainline North of Exit 5	14633H	2016-2019	\$48.7
25	Future	Future Corridor Paving	14633J	2018-2020	\$15.8
26	Future	NB & SB Mainline South of Exit 1	13933A	2018-2020	\$15.7
27	Future	Exit 3 PNR	10418H	2016-2017	\$2.5
Future Projects subtotal:					\$233.4
Total Construction Cost:					\$580.2