

COMPLETION OF CONTRACT 14633F will finalize the reconstruction of **Exit 5**, tying into the completed ramps project and the new PNR. **Severino Trucking Co, Inc. of Candia, NH won the contract with a low bid of \$36.7M.** \$35.5 is dedicated to contract 14633F, and \$1.2 M to 10418F (South Road Mitigation). The total project cost is \$38.5M. The project involves:

- Replacement of four red-listed bridges.
- Reconstruction and widening of 2 +/- miles of I-93 NB & SB
- Reconstruction and widening of 1 +/- miles of Route 28
- Construction of a new NB off-ramp and connections to the remaining ramps previously constructed under the Exit 5 ramps project
- Reconstruction of segments of Perkins and Auburn Roads, and Liberty and Independence Drives.

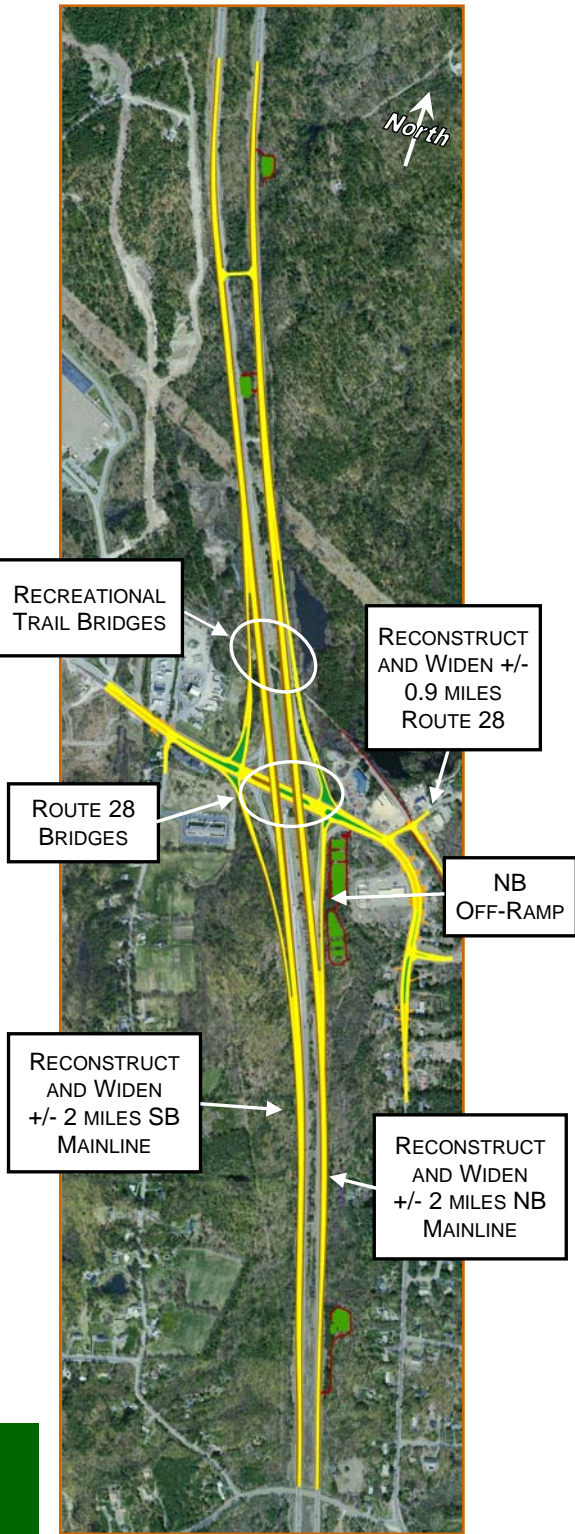
This spring the contractor continued work on Route 28 and the interchange at Exit 5. Final curbing and signal work has been completed on Route 28. Construction on the highway included removal of the cross-over detour and restoration of traffic for NB and SB to the new lane configuration. Final slope construction and placement of gravel for final paving is nearly complete.

Completion of the project is targeted for August. Final paving will be done during July and drainage detention basins will be completed. Seeding of slopes for turf establishment will be completed throughout July and as needed in August.



Completed Route 28 under I-93

Contract 10418F: This project consists of constructing wetland mitigation on two sites that will be accessed from Gilcreast and South Roads, southwest of the I-93 Exit 4 interchange in the town of Londonderry. The sites provide 75.2 acres of mitigation consisting of 11.6 acres of created wetlands/habitat enhancement and 63.6 acres of upland preservation land. A new culvert box that carries South Road over a tributary to Beaver Brook will improve wildlife connectivity between the two mitigation areas and improve flood conveyance. Also included in this project is the reconstruction of a segment of South Road in the vicinity of the culvert work.



Contract 14633F, Exit 5 Area



CORRIDOR NEWS

I-93 Construction News and Highlights

Summer 2014 ~ Issue No. 14

~ I-93 Improvements ~ *Moving Ahead* ~

Content:

I-93 Funded	1
Exit 2 Interchange	2
Exit 1 Mainline	3
Project Mobile Website	4
Project Graphic	4 - 5
Project Summary	5
Exit 3 Area Projects	6 - 7
Exit 5 Area Project	8

**New Hampshire
Department of
Transportation**

John O. Morton Building
7 Hazen Drive
Concord, NH 03302-0483

For more information, phone
(603) 271-2171 or email

Contact@
RebuildingI93.com



Northern Section of I-93 is Funded!!!

On May 20th Governor Maggie Hassan signed Senate Bill (SB) 367, bipartisan legislation that strengthens infrastructure investment, helping to finish the expansion of I-93 and advance critical road and bridge projects across the state. SB 367 is expected to generate approximately \$32-\$33 million per year in new revenue starting in Fiscal Year 2015. Known formally as the "road toll", this increased revenue of 4.2 cents per gallon on motor fuel sales prices went into effective on July 1, 2014 and is the first increase in New Hampshire's "road toll" since 1991. The funds raised by this bill will be utilized to bond a significant portion of the remaining work in the I-93 Salem to Manchester Corridor.



Governor Maggie Hassan signed SB 367 into law during a ceremony on May 20, 2014.

The 13933H contract, which began construction early this year, will substantially complete the southern portion of the Salem to Manchester Corridor. The majority of the construction effort to date for the I-93 Corridor has been focused on the area from Exit 3 South. While Exit 5 has been under construction for a few years now, there are a number of remaining capacity improvement projects that are needed to complete the work from north of Exit 3 to the I-293 Interchange in Manchester. These projects constitute approximately \$250M worth of work that will be done between the fall of 2015 and 2020. With the passage of SB 367, the state will be able to accelerate the construction of the remaining project. See the anticipated project schedule below.

Targeted Schedule of Remaining I-93 Contracts

Contract #	Contract Description	2015	2016	2017	2018	2019	2020
14633B	NB & SB Mainline between Exit 3 & 4	■	■	■	■		
14633C	NH 102 Bridge at Exit 4	■	■	■	■		
14633D	NB & SB Mainline & Ramps at Exit 4	■	■	■	■		
14633I	NB & SB Mainline between Exit 4 & 5		■	■	■	■	
14633H	NB & SB Mainline North of Exit 5		■	■	■	■	
14633J	Future Corridor Paving					■	■

EXIT 2, INTERCHANGE RECONSTRUCTION

PROJECT OVERVIEW: **Contract 13933E** will finalize the reconstruction of Exit 2. When complete, three travel lanes in each direction will be operational from the state line to the Windham/Salem Town Line near Brookdale Road overpass. **The contract was awarded to George Cairns & Sons with a bid of \$40.9M in July 2012 and is currently 60% complete.** This project will:

- Replace two red-listed bridges over Pelham Road.
- Reconstruct/widen approximately 1.3 miles of I-93 NB and 1.8 miles of SB Mainline.
- Reconstruct/widen Pelham Road to an eight-lane section, between Stiles/Manor Parkway and Policy Street.
- All (five) traffic signals along Pelham Road will be coordinated to improve traffic flow.
- Construct a 1,950 linear foot sound wall along the NB mainline near South Shore Road.
- Construct Haigh Avenue mitigation site, creating 7.6 acres and nine acre-feet of floodplain mitigation.

The contractor has opened the first half of the new SB bridge over Pelham Road and is aiming to open the new NB bridge by early fall. Work will continue on Pelham Road and Exit 2 ramp with the overall **goal of completing the project in the summer of 2015.**

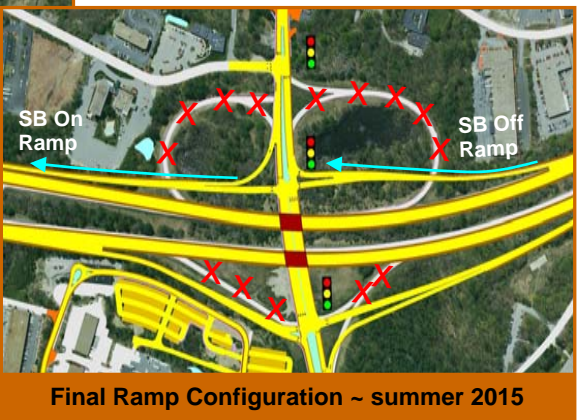
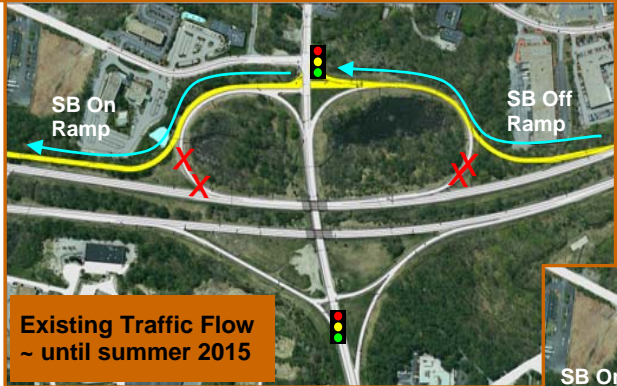


Setting Steel for new SB Bridge



Southbound On & Off-Ramps:

During the reconstruction of the Exit 2 area, re-routing of traffic on the SB exit ramps will be required to minimize traffic impacts. These graphics show the current and the final configuration for the SB on- and off-ramps at Exit 2. It is anticipated that the SB Ramps will remain in their current configuration until summer 2015. At that time the ramps will be changed to their final configuration.



Final Ramp Configuration ~ summer 2015

PROJECT OVERVIEW: **Contract 13933N, completed in September 2013,** involved reconstruction of the I-93 SB mainline bridges over NH Route 111 and NH Route 111A at Exit 3 in Windham. The contract was awarded to E. D. Swett, Inc. of Concord, NH on January 11, 2012 for a bid price of \$11.5M. Because SB traffic was on the new future NB mainline, it was possible to perform work out of traffic, minimizing impacts to the traveling public. The two previously existing SB bridges were determined to be structurally deficient and were designated as "Red List" bridges. These bridges were demolished to make room for the new bridges. This was the third of five projects required to complete highway improvements in the Exit 3 area. The total construction cost of the project was \$12.1M.



Panorama of Completed SB Bridge over Route 111

Contract 13933H involves the reconstruction and widening of 2.17 miles of I-93 NB mainline in Windham, mostly north of Exit 3, reconstruction of NH Route 111A and the NB on & off ramps. This is the fifth of five roadway projects in the Exit 3 area and will complete all roadway work in this area.

The contract for this project was awarded to Weaver Bros. Construction Co., Inc. of Bow, NH December 4, 2013 for a low bid of \$32.3M. This project has an estimated total cost of \$34.9M and **will complete the improvements planned for the Exit 3 area by the summer of 2016.** The contractor started work this past winter with clearing of



Excavation for new NB ramp

trees and rock excavation. Significant progress has been made with the excavation for the future Park-and-Ride and the new NB off-ramp. Work has also begun at the northern end of the project adjacent to the NB lanes. Blasting for the NB off-ramp will continue, with blasted rock being crushed and stock-piled for future use as gravel. Work will continue adjacent to NB (north of Exit 3 by the weigh station) with blasting of ledge and construction of a drainage detention basin.

**CONTRACT 13933I - EXIT 3 SB MAINLINE,
SB ON-RAMP AND NH ROUTE 111**

This contract is reconstructing and widening 2.9 miles of I-93 SB mainline in Windham in the Exit 3 area, relocating 1.25 miles of NH Route 111 and constructing a new SB on-ramp. This is the fourth of five projects required to complete highway improvements in the Exit 3 area.

This contract was awarded to R. S. Audley, Inc. of Bow NH with a low bid of \$33M. The contractor is substantially complete with the SB gravel and paving as well as the NH111 rock excavation. It is anticipated that the new SB lanes will be opened in the fall. Next year will see the completion of NH111. The project is currently 60% complete and is **expected to be completed in the summer of 2016** at an estimated total cost of \$35.1M.



Rock cut/earth work for relocation of Route 111 west of I-93
(Looking West)

CONTRACT 10418H - EXIT 3 AREA PARK-AND-RIDE

This contract will reconstruct a Park-and-Ride Facility within the existing state Right-of-Way in the existing NB on-ramp loop area. Because of its location, all roadway construction at Exit 3 must be completed prior to the PNR being constructed. Therefore, **this project is not anticipated to advertise before the summer of 2016.**



Exit 3 Area Construction showing contract breakouts

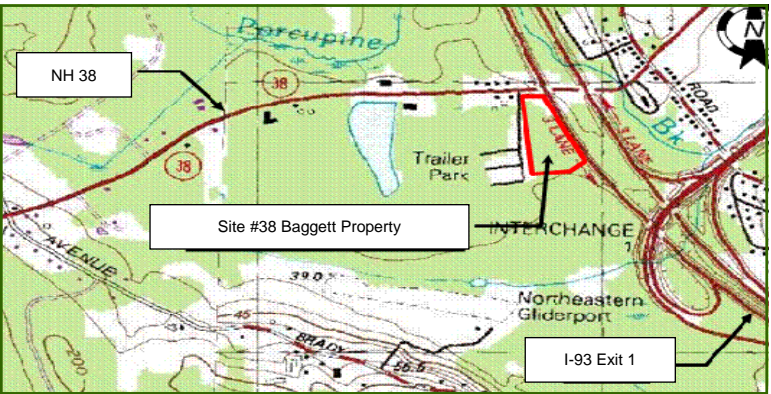
Contract 13933D, was completed in August of 2013, included the reconstruction and widening of NB and SB I-93 mainline in Salem from the vicinity of Exit 1 to just south of Exit 2, **replacement of the NB and SB I-93 bridges over Lowell Road**, and **reconstruction of the Exit 1 NB and SB Ramps**. This project tied into the previously completed 13933C project which improved the Exit 1 Ramps and Bridges.

Also included was approximately 1,600 linear feet of **sound wall** along the SB mainline in the vicinity of Lowell Road, and construction of the **Baggett Wetlands Mitigation Site**. This project extended the three-lane section north beyond the influence of the Exit 1 NB on-ramp.

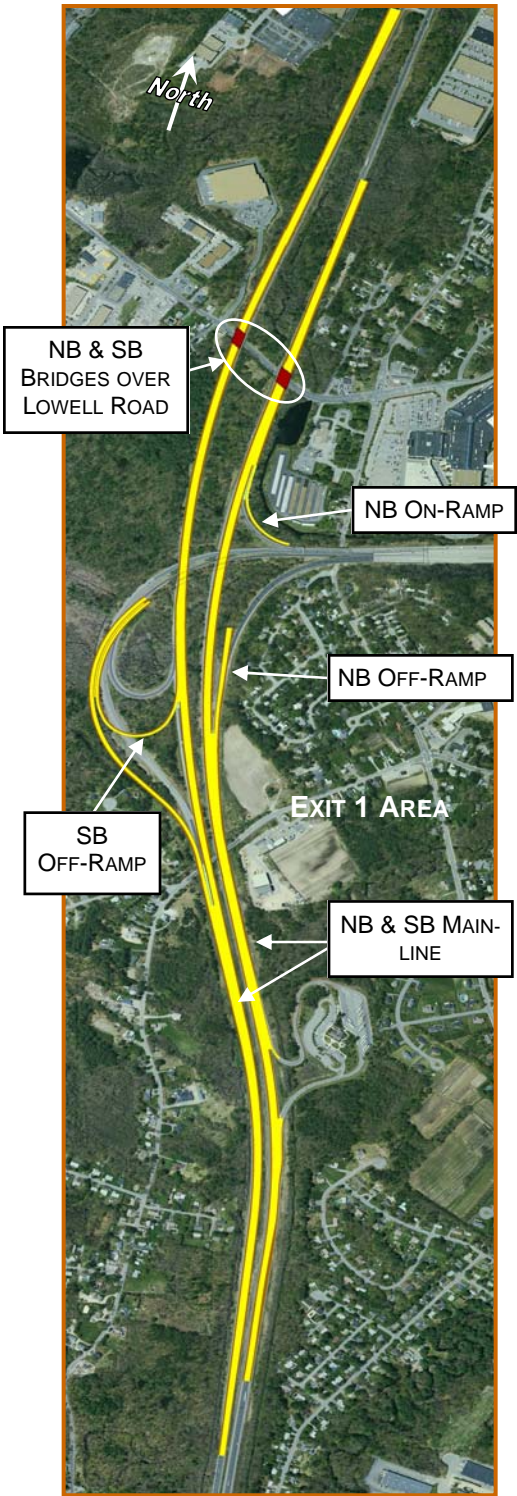
The project was awarded in November 2010 to Middlesex Corporation of Littleton, MA with a low bid of \$30.6M.



Southbound On-Ramp with Southbound Mainline Merge ~ August 2013



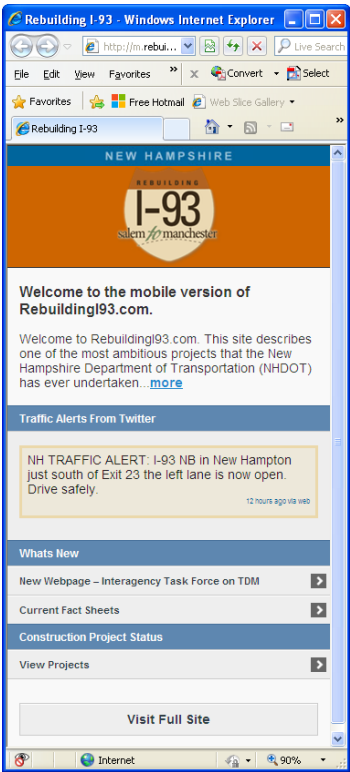
WETLAND MITIGATION: Contract 13933D included the creation of the **Baggett Wetland Mitigation Site** located off NH 38 (Lowell Road) in Salem. The six-acre site will provide critical flood storage and preserve wildlife habitat.



Contract 13933D ~ Exit 1 Area

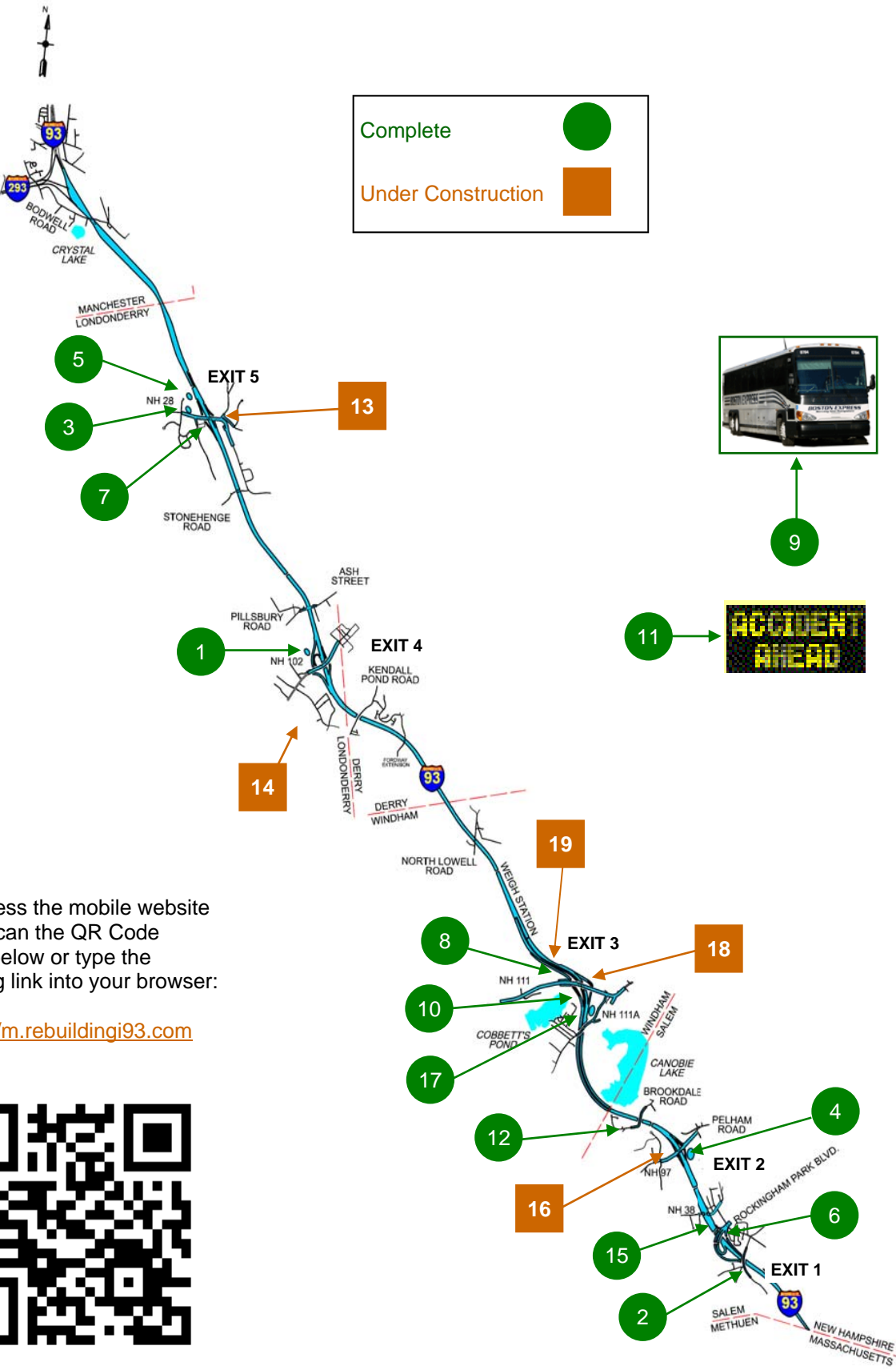
I-93 PROJECT MOBILE WEBSITE

The I-93 Project Website, rebuildingi93.com, has gone mobile! Easily access information on traffic impacts through construction updates and Twitter feeds. Also see "What's New" and access basic project status information. From the mobile website, a link will take the user to the full website for a wealth of information regarding the reconstruction of I-93.



To access the mobile website
Scan the QR Code
below or type the
following link into your browser:

<http://m.rebuildingi93.com>



I-93 PROJECT SUMMARY OF PROJECTS TO DATE

	Status	Project Description	Contract Number	Constructed To/From	Cost (M)
1	Complete	Exit 4 Bus Terminal/PNR	10418M	01/06 - 05/07	\$1.4
2	Complete	Cross Street Bridge	13933B	11/06 - 10/08	\$6.9
3	Complete	Exit 5 PNR/Rockingham Road	10418I	12/06 - 10/08	\$7.8
4	Complete	Exit 2 Bus Terminal/PNR	10418G	03/07 - 10/08	\$7.1
5	Complete	Exit 5 Bus Terminal/Maintenance Facility	10418N	08/07 - 10/08	\$7.2
6	Complete	Exit 1 Ramps & Bridges	13933C	09/07 - 10/09	\$24.7
7	Complete	Exit 5 Ramps & Bridges	14633E	07/08 - 05/10	\$15.8
8	Complete	Exit 3 SB Off-Ramp & NB Bridges	13933K	09/08 - 11/10	\$27.6
9	Complete	Bus Procurement - Operation Costs for Expanded Service	10418L	Service Began 11/08	\$12.5
10	Complete	Exit 3 NB Mainline	13933G	05/09 - 04/12	\$30.7
11	Complete	Phase I Intelligent Transportation Systems (ITS)	10418Z	11/09 - 11/11	\$4.4
12	Complete	Brookdale Road Bridge	13933F	06/10 - 07/12	\$5.1
15	Complete	Exit 1 Area, NB & SB Mainline	13933D	03/11 - 08/13	\$32.7
17	Complete	Exit 3 SB Bridges over Routes 111 & 111A	13933N	03/12 - 9/13	\$12.1
13	In Progress	Exit 5/Route 28 Interchange	14633F	03/11 - 08/14	\$37.3
14	In Progress	South Road Mitigation	10418F	03/11 - 08/14	\$1.3
16	In Progress	Exit 2 Interchange Reconstruction	13933E	07/12 - 8/15	\$43.6
18	In Progress	Exit 3 - SB Mainline, SB On-Ramp & NH 111	13933I	10/12 - 6/16	\$35.1
19	In Progress	Exit 3 NB Mainline, NH Route 111A	13933H	11/13 - 06/16	\$39.9

Completed to date: \$196.0M

In Progress: \$157.2M

=====
Total: \$353.2M

Future Capacity Improvements (2015 - 2020)

\$250.0M

