

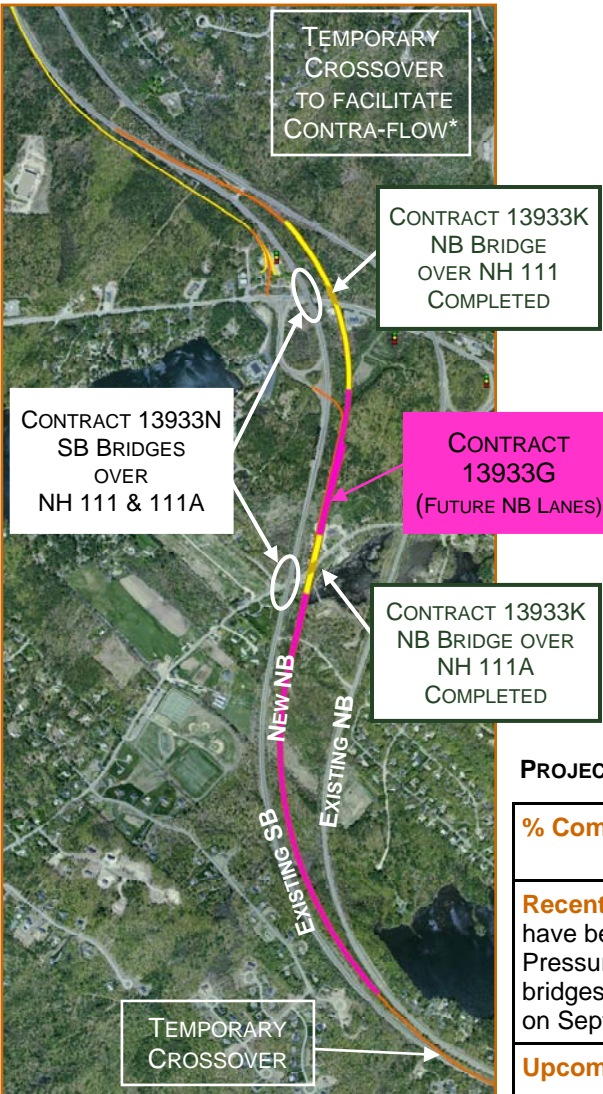
REBUILDING I-93 SALEM TO MANCHESTER



EXIT 3 AREA SB BRIDGES OVER ROUTES 111 AND 111A

PROJECT OVERVIEW: **Contract 13933N** involved reconstruction of the I-93 SB mainline bridges and approach work over NH Route 111 and NH Route 111A at Exit 3 in Windham. The new bridges have been constructed adjacent and look similar to the recently completed bridges over NH 111 and 111A. The two existing bridges were determined to be structurally deficient and designated as "Red List" bridges. **This project was completed September 2013** and is the third of six projects required to complete improvements in the Exit 3 area.

PROJECT FACT SHEET



PROJECT FACTS	CONTRACT: 13933N
Advertised Date:	October 11, 2011
Award Date:	January 11, 2012
Start Construction Date:	January 2012
Completion Date:	September 19, 2013
Bid Price:	\$11.5 M
Total Construction Cost (Est):	\$12.13 M
Contractor:	E. D. Swett, Inc., Concord, NH

Traffic Implications: No further work will take place.

PROJECT SCHEDULE

% Complete:	SB Bridge over NH Route 111A: 100% SB Bridge over NH Route 111: 100%
Recent Activities:	The dry standpipes for use by the fire department have been installed and adjusted per the fire department's request. Pressure testing of the dry standpipes at about the Route 111 and 111A bridges was completed and the Final Acceptance Inspection took place on September 19, 2013.
Upcoming Activities:	Work is complete.

Updated: 10-08-2013



RebuildingI93.com

MOVING
AHEAD



Panorama of Completed SB Bridge over Route 111, 09-13



Panorama of Completed SB Bridge over Route 111A, 09-13



*Route 111
Bridge Rail
09-13*

